

RHYTHM PILE

LONGO



(16TH NOTES = PREVIOUS 8TH NOTES)

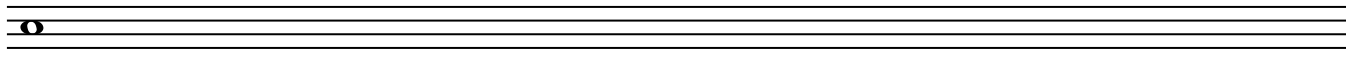


(JAZZ 4/4 TIME)

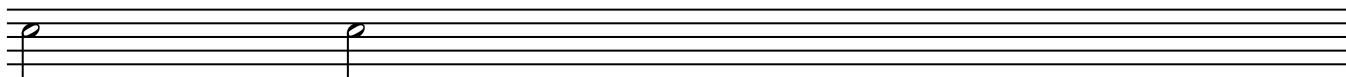


Additive Rhythm Fig 2

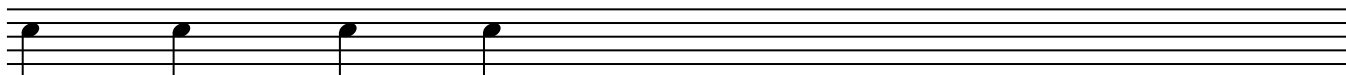
2



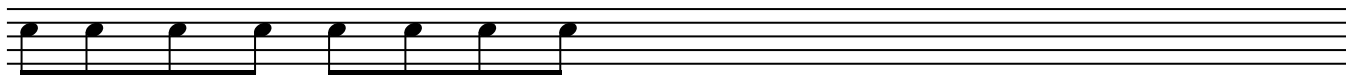
3



4



5



5+7

Additive Rhy. Ex.

1

2

3

3 + 5

4

5 + 7

CHAMELION EX.

ADDITIVE RHY.



3 + 3 + 4

MANTECA EX.



2 + 3

CONFIRMATION FIG 3

SYNCOPIATION

Musical notation for Confirmation Fig 3, Syncopation. A single staff in treble clef with a common time signature. The melody consists of eighth notes with a triplet of eighth notes in the second measure. The piece ends with a double bar line and a repeat sign.

CONFIRMATION IN 6/8 NOTATION

Musical notation for Confirmation in 6/8 notation. A single staff in treble clef with a 6/8 time signature. The melody consists of eighth notes. Fingering numbers 1-6 are written below the notes.

Musical notation for Confirmation in 6/8 notation. A single staff in treble clef with a 6/8 time signature. The melody consists of eighth notes. Fingering numbers 1-6 are written below the notes.

CONFIRMATION IN 6/8 WITH 3S AND 6S ACCENTED

Musical notation for Confirmation in 6/8 with 3s and 6s accented. A single staff in treble clef with a 6/8 time signature. The melody consists of eighth notes. A triplet of eighth notes is accented in the first measure. Fingering number 3 is written below the triplet.

Musical notation for Confirmation in 6/8 with 3s and 6s accented. A single staff in treble clef with a 6/8 time signature. The melody consists of eighth notes. Triplet and sextuplet markings are placed above the notes in the first, second, and fourth measures. Fingering numbers 3 and 6 are written below the notes.

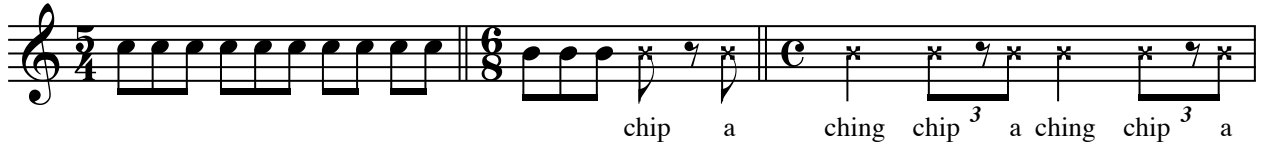
CONFIRMATION IN 6/8 ADDITIVE RHYTHM

Musical notation for Confirmation in 6/8 additive rhythm. A single staff in treble clef with a 6/8 time signature. The melody consists of eighth notes. Additive rhythm numbers are written below the notes.

Musical notation for Confirmation in 6/8 additive rhythm. A single staff in treble clef with a 6/8 time signature. The melody consists of eighth notes. Additive rhythm numbers are written below the notes.

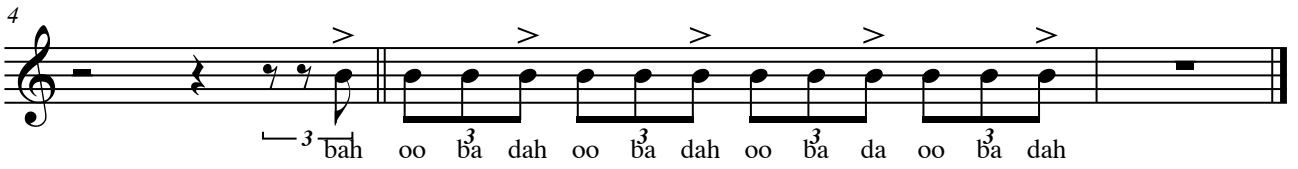
Be Bop Cymbal Beat

A



Musical notation for section A, consisting of three measures. The first measure is in 5/4 time with a treble clef, containing a continuous eighth-note pattern. The second measure is in 6/8 time with a bass clef, containing a dotted quarter note followed by an eighth note, then a quarter note, and a dotted quarter note. The third measure is in common time with a bass clef, containing a dotted quarter note, a quarter note, a dotted quarter note, and a quarter note. The lyrics 'chip a ching chip³ a ching chip³ a' are written below the notes.

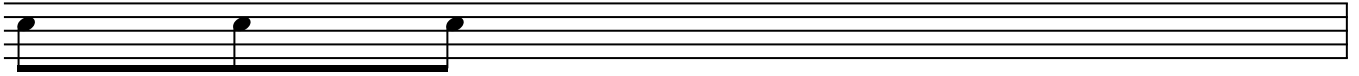
B



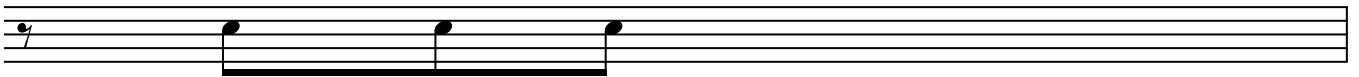
Musical notation for section B, consisting of four measures. The first measure is in 4/4 time with a treble clef, containing a quarter rest followed by a quarter note. The second measure is in 4/4 time with a treble clef, containing a quarter note, a quarter note, a quarter note, and a quarter note. The third measure is in 4/4 time with a treble clef, containing a quarter note, a quarter note, a quarter note, and a quarter note. The fourth measure is in 4/4 time with a treble clef, containing a quarter note, a quarter note, a quarter note, and a quarter note. The lyrics 'bah oo ba³ dah oo ba³ dah oo ba³ da oo ba³ dah' are written below the notes.

Permutations

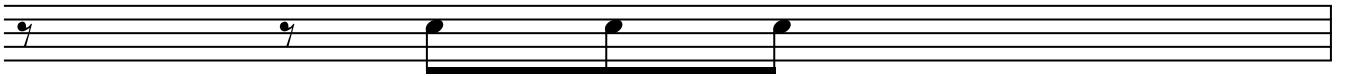
2



3

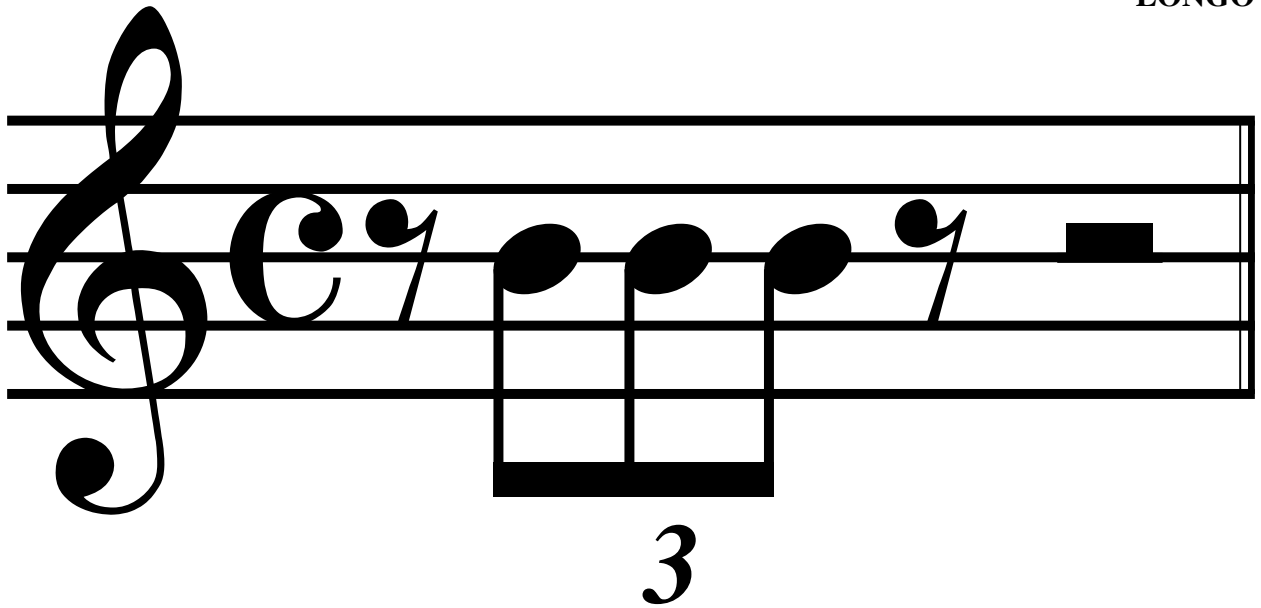


4



DIZ TRIPLET

LONGO



TRIPLET EXAMPLE

LONGO

The image displays two systems of musical notation for a triplet exercise. The first system consists of two staves. The upper staff is in treble clef and contains four groups of three eighth notes, each marked with a '3' above a bracket. The lower staff is in bass clef and contains four groups of three eighth notes. The second system also consists of two staves. The upper staff begins with a measure of two eighth notes, followed by two groups of three eighth notes marked with '3', and ends with a measure of two eighth notes. The lower staff continues with four groups of three eighth notes. The tempo marking 'LONGO' is located in the upper right corner.