

# Donna Lee

openstudiojazz.com

Charlie Parker

The musical score for Donna Lee is presented in eight staves of music. The key signature is B-flat major (two flats). The score includes various chords and scales, with specific annotations for 'Secret Dominant Scale' and 'Broken 9th Chord'. Triplet markings (3) are used throughout the piece.

**Staff 1:** Chords: Ab, F7 (Secret Dominant Scale), Bb7 (Broken 9th Chord). Triplet markings: 3, 3 5 7 9.

**Staff 2:** Chords: Bb-7, Eb7 (Broken 9th Chord), Ab (Broken 9th Chord), Eb-7 (Broken 9th Chord), D7. Triplet markings: 3 5 7 9, 3 5 7 9, 3 5 7 9.

**Staff 3:** Chords: Db, Db-7, Ab, F7 (Secret Dominant Scale). Triplet markings: 3.

**Staff 4:** Chords: Bb7, Bb-7 (Broken 9th Chord), Eb7. Triplet markings: 3, 3 5 7 9, 3.

**Staff 5:** Chords: Ab, F7 (Secret Dominant Scale), Bb7 (Broken 9th Chord). Triplet markings: 3, 3 5 7 9.

**Staff 6:** Chords: C7, Fm, C7(#9), Fm. Triplet markings: 3.

**Staff 7:** Chords: C7, Fm (3), Bb7. Triplet markings: 3.

**Staff 8:** Chords: C-7 (Secret Dominant Scale), F7, Bb-7 (Broken 9th Chord), Eb7, Ab. Triplet markings: 3 5 7 9.

## "Secret" Dominant Scale

Bb Harmonic Minor Scale



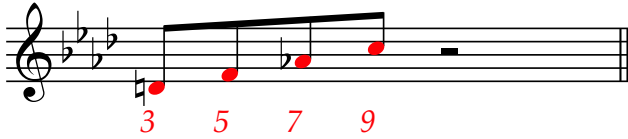
F7



Secret Dominant Scale

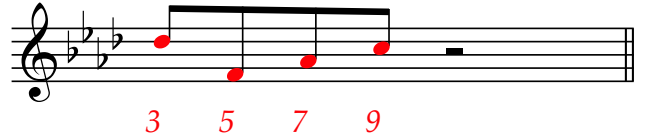
## Broken 9th Chords

Bb<sup>9</sup>



Broken 9th Chord

Bbm<sup>7</sup>



Broken 9th Chord