

Lesson 14

The Star Spangled Banner

Key/Smith

C G Am E Am D7 G

The first line of guitar tablature consists of five measures. The first measure (C) has notes 0, 2, 3 on the strings. The second measure (G) has notes 2, 0. The third measure (Am) has notes 1, 0, 3. The fourth measure (E) has notes 1, 2, 4. The fifth measure (Am D7 G) has notes 0, 0, 0.

C G F C G C G

The second line of guitar tablature consists of five measures. The first measure (C) has notes 3, 1. The second measure (G) has notes 0, 2, 0. The third measure (F) has notes 1, 1, 0. The fourth measure (C) has notes 2, 3, 2. The fifth measure (G C G) has notes 3, 2, 0.

Am E Am D7 G C G F

The third line of guitar tablature consists of five measures. The first measure (Am) has notes 1, 0, 3. The second measure (E) has notes 1, 2, 4. The third measure (Am) has notes 0, 0, 0. The fourth measure (D7) has notes 0, 3, 1. The fifth measure (G F) has notes 0, 2, 0.

C G7

The fourth line of guitar tablature consists of five measures. The first measure (C) has notes 1, 1, 0. The second measure (C) has notes 0, 0. The third measure (C) has notes 0, 1, 3. The fourth measure (C) has notes 3, 1, 0. The fifth measure (G7) has notes 3, 0, 1.

C G F C Am D7 G

The fifth line of guitar tablature consists of five measures. The first measure (C) has notes 1, 1. The second measure (C) has notes 0, 3, 1. The third measure (G) has notes 0, 2, 0. The fourth measure (F) has notes 1, 2, 4. The fifth measure (C Am D7 G) has notes 0, 0.

C F A7 Dm C G

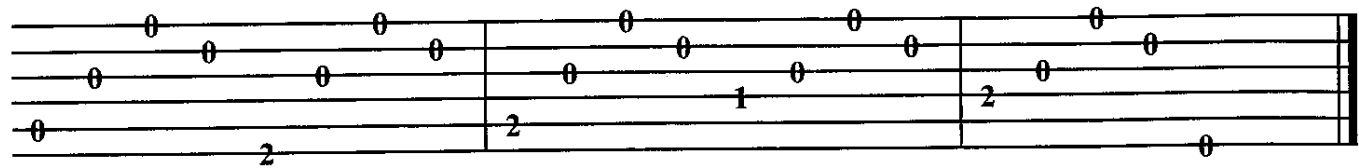
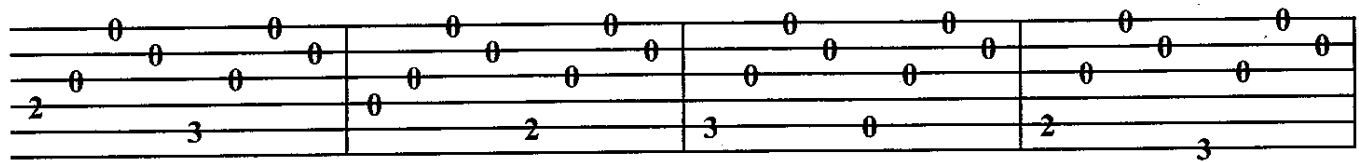
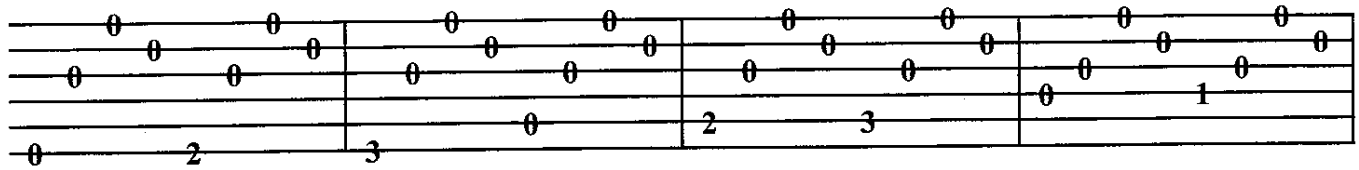
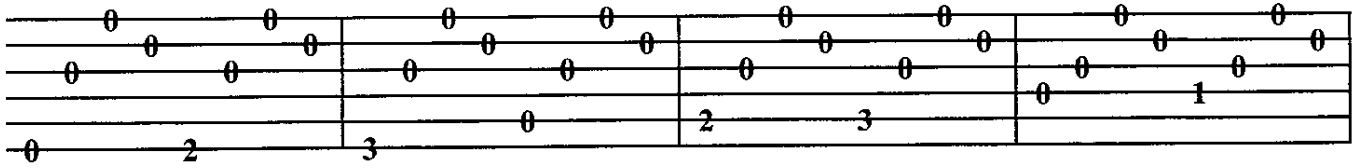
The sixth line of guitar tablature consists of four measures. The first measure (C) has notes 1, 1, 1, 0. The second measure (F) has notes 2, 2, 2. The third measure (A7 Dm) has notes 3, 0, 1, 0, 3, 1. The fourth measure (C G) has notes 1, 0, 0, 0.

C G7 C Am C G7 C

The seventh line of guitar tablature consists of four measures. The first measure (C) has notes 1, 3, 0, 1. The second measure (G7) has notes 3, 1, 3. The third measure (C) has notes 0, 1, 3. The fourth measure (C) has notes 1.

Lesson 15

Lament



Lesson 18

Greensleeves

folk song

A D G E- A- E

Handwritten guitar tablature for the first line of 'Greensleeves'. The notes are A, D, G, E-, A-, and E. The fret numbers are: 1 3, 0 2 0, 3 0, 0 2 0, 1 2, 2 1 2, 0 1, 2 2.

A- D G E- A- E A-

Handwritten guitar tablature for the second line of 'Greensleeves'. The notes are A-, D, G, E-, A-, E, and A-. The fret numbers are: 1 3, 0 2 0, 3 0, 0 2 0, 1 0 2, 1 4 1, 2 2 2, 2.

C G E- A- E

Handwritten guitar tablature for the third line of 'Greensleeves'. The notes are C, G, E-, A-, and E. The fret numbers are: 3, 3 2 0, 3 0, 0 2 0, 1 2, 2 1 2, 0 1, 2.

C G E- A- E A-

Handwritten guitar tablature for the fourth line of 'Greensleeves'. The notes are C, G, E-, A-, E, and A-. The fret numbers are: 3, 3 2 0, 3 0, 0 2 0, 1 0 2, 1 4 1, 2 2 2, 2.

A- D G E- A- E

Handwritten guitar tablature for the fifth line of 'Greensleeves'. The notes are A-, D, G, E-, A-, and E. The fret numbers are: 1 3, 0 2 0, 3 0, 0 2 0, 1 2, 2 1 2, 0 1, 2 2.

A- D G E- A- E A-

Handwritten guitar tablature for the sixth line of 'Greensleeves'. The notes are A-, D, G, E-, A-, E, and A-. The fret numbers are: 1 3, 0 2 0, 3 0, 0 2 0, 1 0 2, 1 4 1, 2 2 2, 2.

Lesson 19

Lavender

